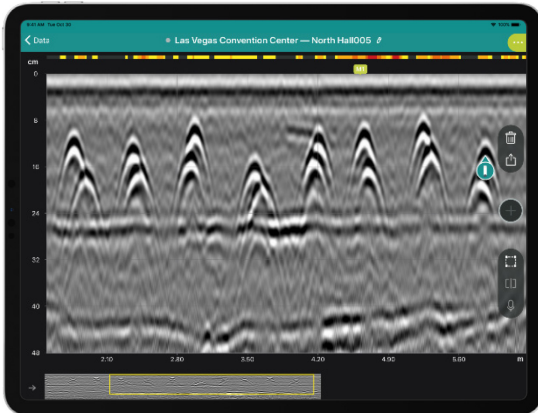


Proceq® GPR Live



GP8800

Structural imaging and inspection with SFCW ground penetrating radar technology



Performance

Superior depth and clarity of data thanks to the unique Swiss Made radar technology with all the frequencies you'll ever need. Immediate insights with 3D and Augmented Reality.



Versatility

Inspect with ease of use, from the tightest spots to the tallest walls. Tiny footprint and gigantic flexibility. Superior ergonomics to tackle any challenge with comfort—without cables.



Productivity

A mobile app that lets you annotate measurements with voice, photos, and comments. Generate reports and share them instantly. Access your data from anywhere, anytime.

Proceq® GP8800

Model	Pro
Applications	Concrete hit prevention, as-built verification, structural investigation, slab thickness measurement, void detection
Software sourcing option	Subscription
EagleCare	Available
Time-Slice View Pro	●
3D View with ColorDepth	●
Augmented Reality (AR)	●
Cloud synchronization	●
Cloud sharing via URL	●
Cloud-enabled Logbook	●
Cloud-based SEG-Y export	●
Cloud-based report generation	●
Features	
A-scan incl. envelope	●
Non-migrated view	●
Migrated view	●
Area Scan	●
Flexible Grid	●
Exporting formats	JPG, PNG, CSV, SEG-Y, HTML
Time-Slice View Basic	●
Max. line scan length	1000 m / 3281 ft
Max. area scan size	120 x 120 cm / 47.2 x 47.2 in

iPad is a trademark of Apple Inc.; iOS is a registered trademark of Cisco in the US and is used by Apple under license.

*in dry concrete

**without battery



Probe	
Radar technology	Stepped-Frequency Continuous-Wave GPR
Frequency range	400 – 6000 MHz
Depth penetration*	65 cm / 25.6 in
Dimensions**	90 x 90 x 60 mm / 3.5 x 3.5 x 2.4 in
Weight**	460 g / 16.2 oz
Antenna distance to edge	45 mm / 1.77 in
Path measurement	Wireless wheel, ±2% accuracy
Cross-polarization	Yes, adjustable at any time
Ground clearance	0 mm / 0 in

Operating parameters

Built-in battery	Removable pack, 4x AA (NiMH), flight-safe
Off-the-shelf power bank	5V DC, at least 2A
Autonomy	2.5 h (up to 8 hours with off-the-shelf 10'000 mAh power bank)
Connectivity	Wi-Fi® and USB-C to iPad
Status indication	RGB LEDs
Certification	EN ETSI / RED
IP rating	IP54
Operating temperature	-10 to 50 °C / 14 to 122 °F
Operating humidity	<95% RH, non-condensing

Display and processing unit (not included)

Model	Any iPad® (min. iOS 10)
CPU	6-core, 64-bit
Screen technology	Liquid or Retina Display
Screen size	7.9" to 12.9"
Screen resolution	Up to 2732 x 2048 pixels and 326 ppi
Screen type	LED-backlit with multi-touch and IPS technology
Weight	Down to 301 g / 10.6 oz
Storage capacity	Up to 1 TB
Connectivity	Wi-Fi® (802.11a/b/g/n), LTE/5G
Positioning	GPS, A-GPS, GLONASS
User interface languages	English, Chinese, German, Japanese, Korean

