

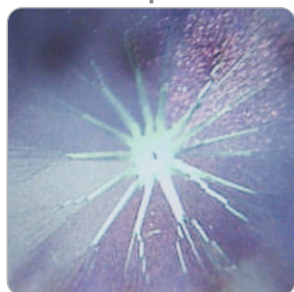
Automatic Cupping Tester



CCD Camera



Adjust focus



Real time monitor



Quickly clamp test panel

Introduction:

BEVS Automatic Cupping Tester is an advance technology to efficiently assess the elasticity and cupping resistance of various coatings, with a new generation micro-electro and CCD technology, also has strong functions such as can be video or photo the deformation process or result that can be copied the image to U disk and then connect with PC to analyze the various factors between coating performance and substrate etc.

Customized design software operation system and provide the USB port for mouse and U disk and camera, best choice for R&D and QC people.

The test is either used as a "pass/fail" test by preset to a specified depth or defining the minimum depth at which a coating fails by gradually increasing the indentation, or carry out the deformation by indentation under standard conditions.



Features:



Built-in OS



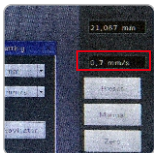
Touch panel control



Real time display cupping process



Real time display depth



Real time display cupping speed



Comes with camera and video function



Auto zero



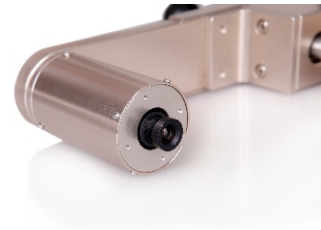
Connect to mouse

Standard:

ISO 1520, GB/T9753, DIN53166

■ Technical info:

- ◆ Stroke length: 0-15mm, accuracy: ± 0.01 mm
- ◆ Indenter speed : 0.02-0.4mm/s, accuracy: ± 0.5 mm
- ◆ Control: Automatic
- ◆ Camera: Colorful CCD
- ◆ Light source: LED light source
- ◆ Cupping result: Digital (resolution 0.001mm)
- ◆ Interface: USB port for mouse & U disk & CCD
- ◆ Max. panel width: 70 mm
- ◆ Max. panel thickness (steel): 1.25 mm (Standard Speed 0.2mm/s)
- ◆ Max. panel thickness (aluminum): 3mm (Standard Speed 0.2mm/s)
- ◆ Max. cupping force: 15KN
- ◆ Power supply: 230 VAC-50 Hz (110V-60Hz option)



■ External HD Camera

BEVS 1606 Automatic Cupping Tester is upgraded with a new function that enable to connect computer for better improvement in the image resolution and clarity, taking pictures and video are available as well. There are two ways to observe the process of cupping, the one is in the cupping tester, another is in the computer.



■ Order info:

BEVS 1606 Automatic Cupping Tester

BEVS 1606/P/003 External HD Camera